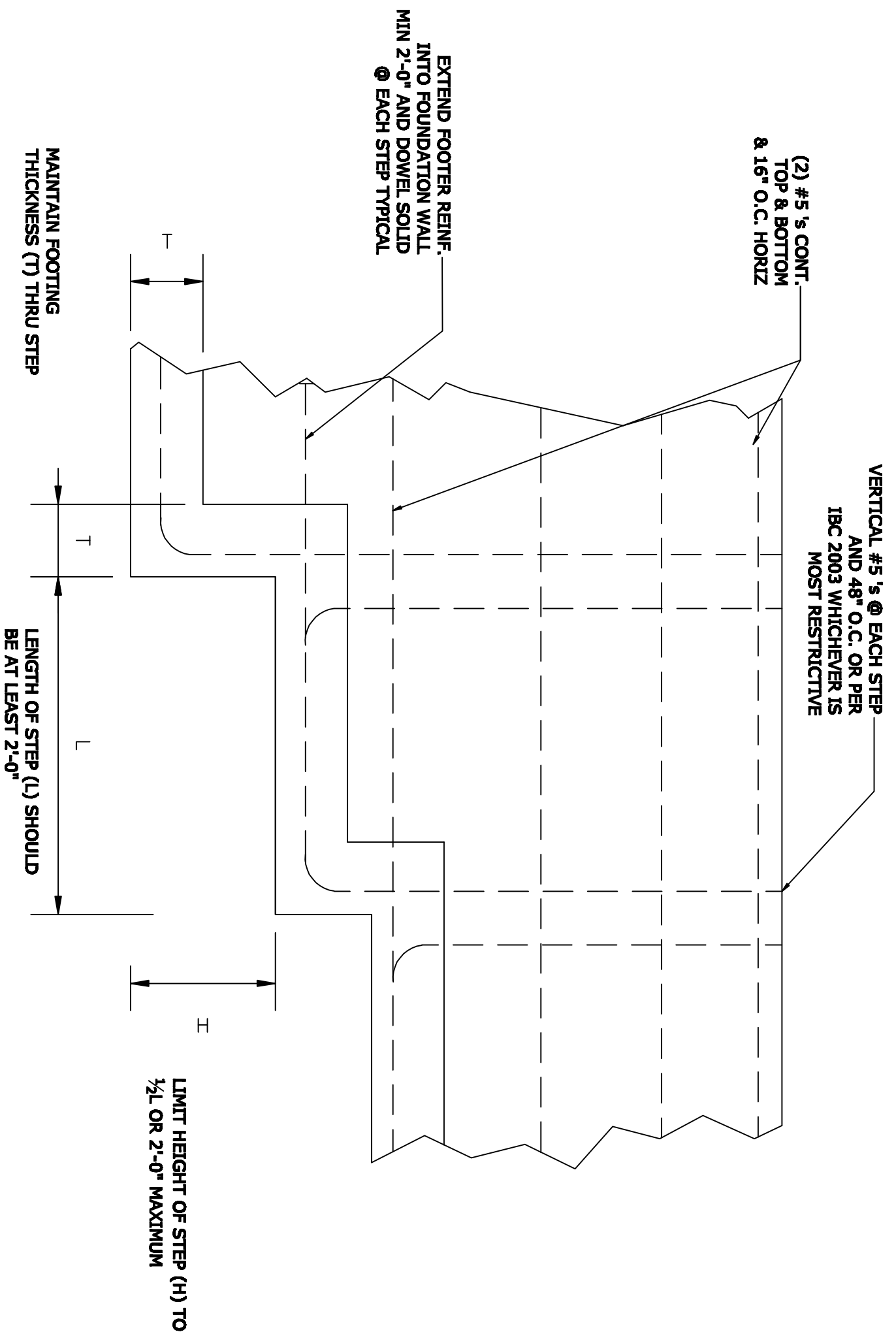


1 SECOND FLOOR FRAMING

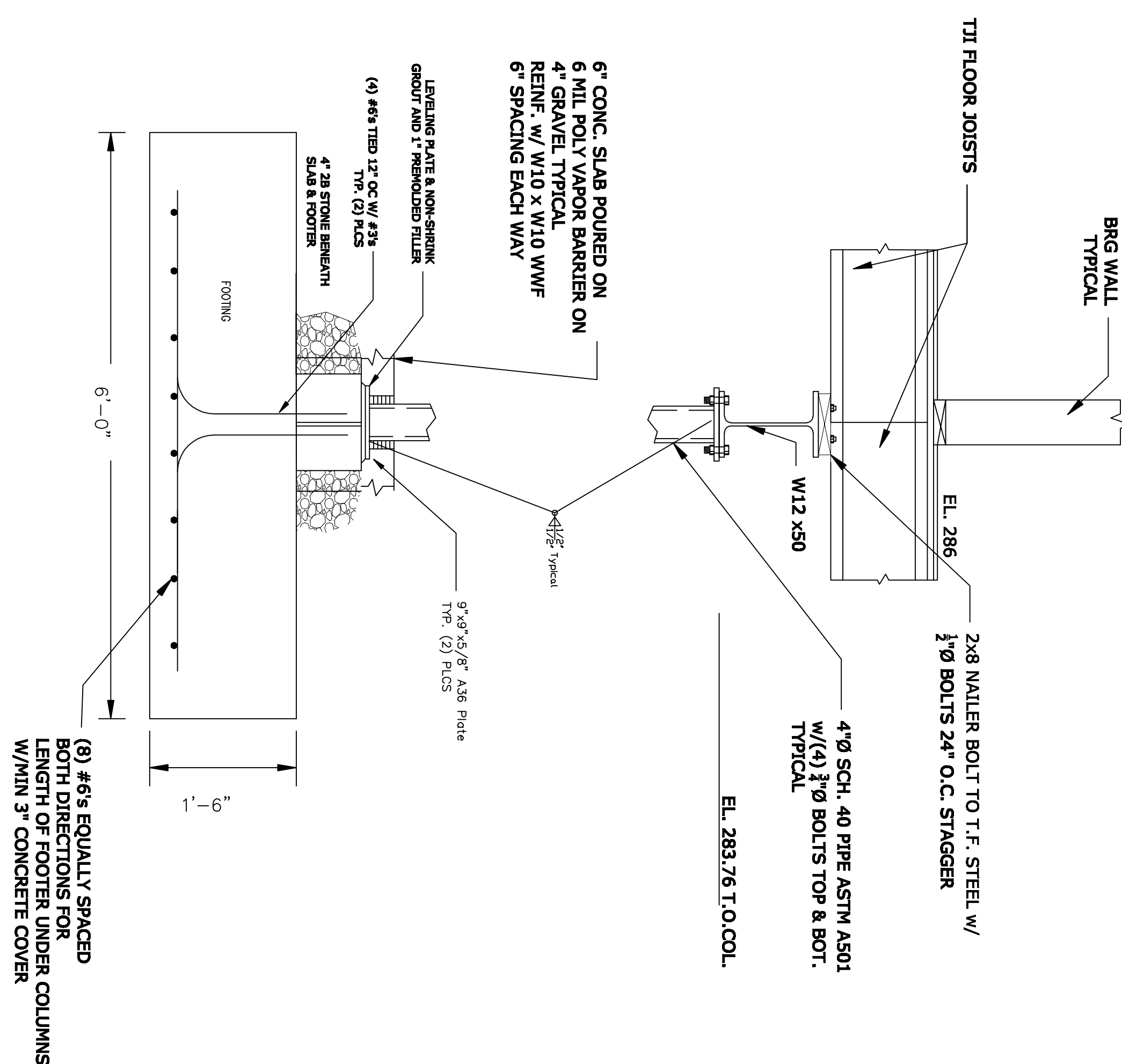
S-3 SCALE: 1/4" = 1'-0"

3/4" APA RATED STURD-I-FLOOR GRADE PLYWOOD. LAY PANELS LONG DIMENSION PERPENDICULAR TO TIS AND SPAN CONTINUOUSLY OVER 2 OR MORE SPANS. NAIL @ 6" O.C. ALONG EDGES 12" O.C. INTERMEDIATE SUPPORTS WITH 8d COMMON NAILS or 6d RING SHANK. GLUE PANELS TO BCI TOP FLANGES WITH APA APPROVED CONSTRUCTION ADHESIVE.



4 TYPICAL STEPPED FOOTER SECTION

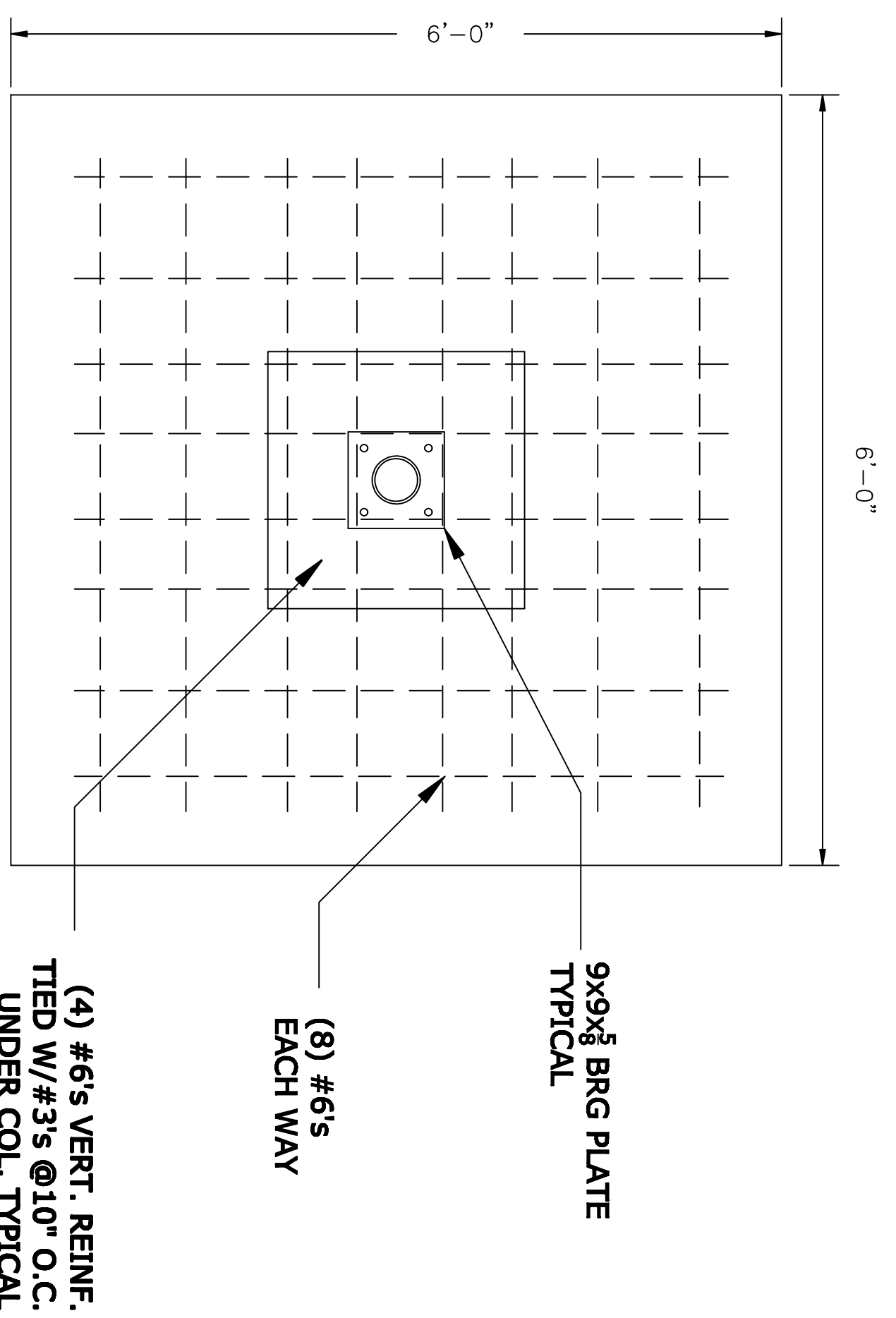
S-3 SCALE: NONE



2 I-BEAM FOOTER ELEVATION

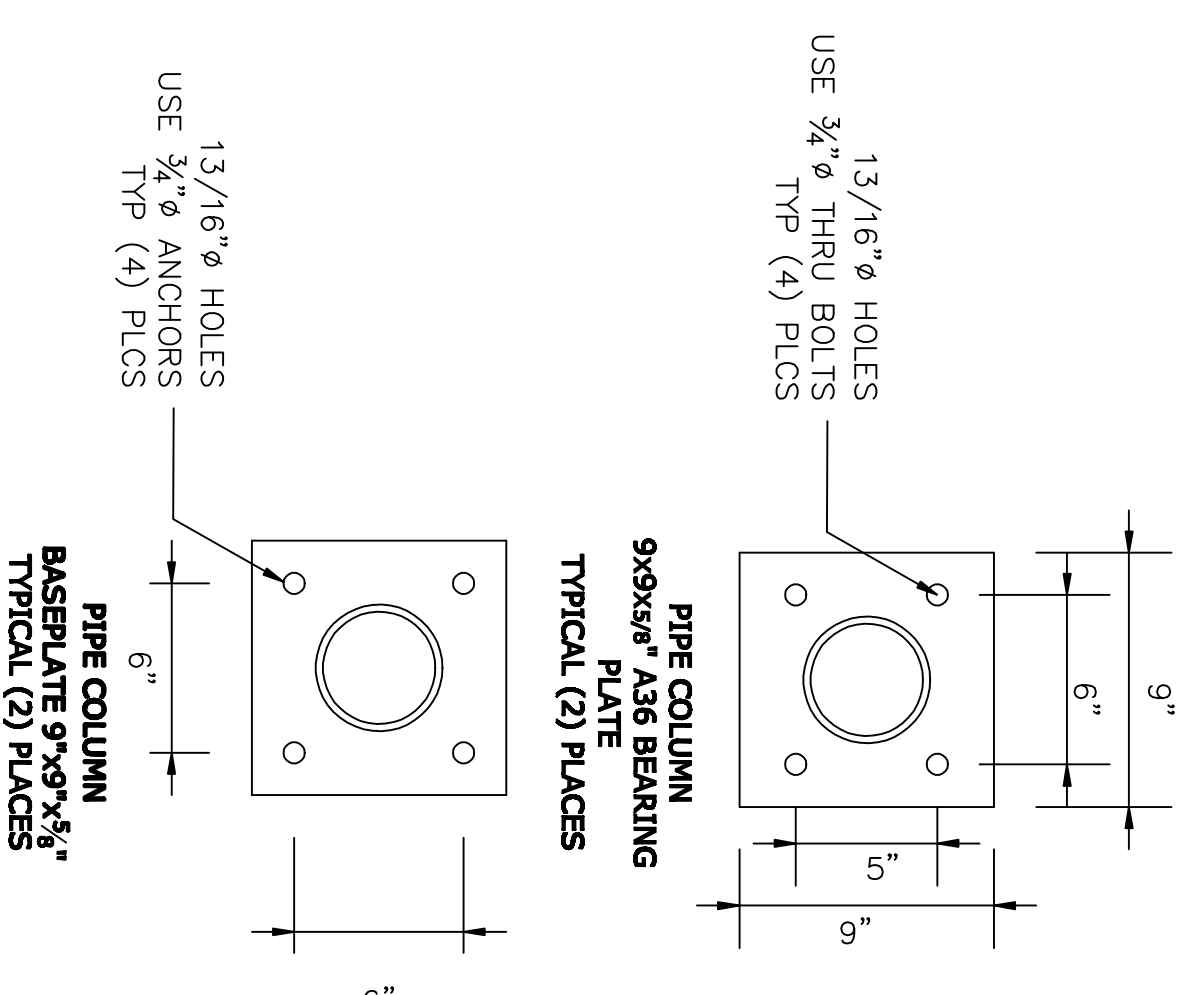
S-3 SCALE: 1" = 1'-0"

(8) #6's EQUALLY SPACED BOTH DIRECTIONS FOR LENGTH OF FOOTER UNDER COLUMNS W/MIN 3" CONCRETE COVER



3 I-BEAM FOOTER PLAN VIEW

S-3 SCALE: 1" = 1'-0"




5 COL. BRG & BP DETAILS

S-3 SCALE: NONE

Tim D. Sasse Professional Engineer Registration Number: PE-046372-R	Date: _____ Signed: _____
--	------------------------------

revised:	date:	description:

SassCo Engineering Inc.
 Consulting & Design

 274 Berwind Road Wayne PA 19087
 TEL: 610 995 2176
 FAX: 610 971 2406

THOMAS RESIDENCE

 425 MULBERRY LANE
 HAVERFORD, PA 19041
 LOWER MERION TOWNSHIP

job number: SSS362 drawn by: IDS checked by: ENV date: 05-25-07 scale: AS SHOWN notes: FRAMING PLANS & DETAILS	S-3
---	-----